

# УДАРНЫЕ ГОЛОВКИ ТОНКОСТЕННЫЕ



Архангельск (8182)63-90-72  
Астана (7172)727-132  
Астрахань (8512)99-46-04  
Барнаул (3852)73-04-60  
Белгород (4722)40-23-64  
Брянск (4832)59-03-52  
Владивосток (423)249-28-31  
Волгоград (844)278-03-48  
Вологда (8172)26-41-59  
Воронеж (473)204-51-73  
Екатеринбург (343)384-55-89

Иваново (4932)77-34-06  
Ижевск (3412)26-03-58  
Иркутск (395)279-98-46  
Казань (843)206-01-48  
Калининград (4012)72-03-81  
Калуга (4842)92-23-67  
Кемерово (3842)65-04-62  
Киров (8332)68-02-04  
Краснодар (861)203-40-90  
Красноярск (391)204-63-61  
Курск (4712)77-13-04  
Липецк (4742)52-20-81

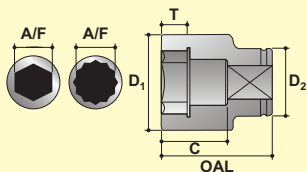
Магнитогорск (3519)55-03-13  
Москва (495)268-04-70  
Мурманск (8152)59-64-93  
Набережные Челны (8552)20-53-41  
Нижний Новгород (831)429-08-12  
Новокузнецк (3843)20-46-81  
Новосибирск (383)227-86-73  
Омск (3812)21-46-40  
Орел (4862)44-53-42  
Оренбург (3532)37-68-04  
Пенза (8412)22-31-16

Пермь (342)205-81-47  
Ростов-на-Дону (863)308-18-15  
Рязань (4912)46-61-64  
Самара (846)206-03-16  
Санкт-Петербург (812)309-46-40  
Саратов (845)249-38-78  
Севастополь (8692)22-31-93  
Симферополь (3652)67-13-56  
Смоленск (4812)29-41-54  
Сочи (862)225-72-31  
Ставрополь (8652)20-65-13

Сургут (3462)77-98-35  
Тверь (4822)63-31-35  
Томск (3822)98-41-53  
Тула (4872)74-02-29  
Тюмень (3452)66-21-18  
Ульяновск (8422)24-23-59  
Уфа (347)229-48-12  
Хабаровск (4212)92-98-04  
Челябинск (351)202-03-61  
Череповец (8202)49-02-64  
Ярославль (4852)69-52-93

Россия (495)268-04-70 Киргизия (996)312-96-26-47 Казахстан (772)734-952-31

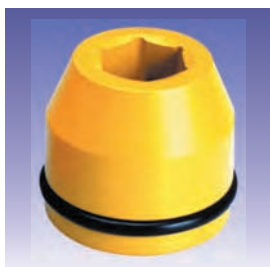
Единый адрес для всех регионов: [www.powermaster.nt-rt.ru](http://www.powermaster.nt-rt.ru) || [pwo@nt-rt.ru](mailto:pwo@nt-rt.ru)



A/F Размер под ключ  
D1 Наружный диаметр головки  
D2 Присоединительный диаметр головки  
OAL Высота головки  
T Глубина под гайку  
C Глубина под шпильку

## ГОЛОВКИ УДАРНЫЕ ТОНКОСТЕННЫЕ

3/4"



### 6-ГРАННЫЕ

A/F мм	МОДЕЛЬ	D1 мм	D2 мм	T мм	C мм	OAL мм	Вес кг.
17	S-12M17T	27.9	42.0	12.0	21.0	45.0	0.292
19	S-12M19T	30.4	42.0	12.0	21.0	45.0	0.296
21	S-12M21T	32.9	42.0	13.0	24.0	48.0	0.312
22	S-12M22T	34.3	42.0	13.0	24.0	48.0	0.317
23	S-12M23T	35.3	42.0	13.0	24.0	48.0	0.318
24	S-12M24T	36.8	42.0	15.0	24.0	48.0	0.322
26	S-12M26T	38.5	42.0	15.0	24.0	48.0	0.320
27	S-12M27T	40.5	42.0	16.0	24.0	48.0	0.329
28	S-12M28T	42.0	42.0	16.0	24.0	48.0	0.334
30	S-12M30T	44.4	44.0	18.0	27.0	51.0	0.391
32	S-12M32T	46.8	44.0	18.0	27.0	51.0	0.410
33	S-12M33T	48.0	44.0	18.0	27.0	51.0	0.416
34	S-12M34T	49.3	44.0	20.0	30.0	54.0	0.449
36	S-12M36T	51.9	44.0	20.0	30.0	54.0	0.477
38	S-12M38T	54.4	54.0	23.0	35.0	59.0	0.684
41	S-12M41T	58.4	54.0	23.0	35.0	59.0	0.736
42	S-12M42T	59.4	54.0	25.0	35.0	59.0	0.737
43	S-12M43T	60.4	54.0	25.0	38.0	62.0	0.778
46	S-12M46T	64.0	54.0	25.0	38.0	62.0	0.833

### FRACTIONAL HEXAGON

A/F inch	MODEL NO.	D1 inch	D2 inch	T inch	C inch	OAL inch	Wt. lbs.
11/16	S-1211T	1.078	1.654	0.472	0.827	1.772	0.640
3/4	S-1212T	1.197	1.654	0.472	0.827	1.772	0.650
13/16	S-1213T	1.295	1.654	0.512	0.945	1.890	0.690
7/8	S-1214T	1.390	1.654	0.512	0.945	1.890	0.700
15/16	S-1215T	1.449	1.654	0.591	0.945	1.890	0.710
1	S-1216T	1.516	1.654	0.591	0.945	1.890	0.710
1.1/16	S-1217T	1.594	1.654	0.630	0.945	1.890	0.720
1.1/8	S-1218T	1.748	1.732	0.709	1.063	2.008	0.860
1.3/16	S-1219T	1.778	1.732	0.709	1.063	2.008	0.880
1.1/4	S-1220T	1.843	1.732	0.709	1.063	2.008	0.900
1.5/16	S-1221T	1.941	1.732	0.787	1.181	2.126	0.990
1.3/8	S-1222T	2.043	1.732	0.787	1.181	2.126	1.050
1.7/16	S-1223T	2.073	1.732	0.787	1.181	2.126	1.080
1.1/2	S-1224T	2.142	2.126	0.906	1.378	2.323	1.500
1.9/16	S-1225T	2.299	2.126	0.906	1.378	2.323	1.620
1.5/8	S-1226T	2.378	2.126	0.984	1.496	2.441	1.710
1.11/16	S-1227T	2.378	2.126	0.984	1.496	2.441	1.710
1.3/4	S-1228T	2.500	2.126	0.984	1.496	2.441	1.810
1.13/16	S-1229T	2.530	2.126	0.984	1.496	2.441	1.840

### 6-ГРАННЫЕ ГЛУБОКИЕ

A/F мм	МОДЕЛЬ	D1 мм	D2 мм	T мм	C мм	OAL мм	Вес кг.
17	S-12M17LT	27.9	42.0	12.0	61.0	85.0	0.421
19	S-12M19LT	30.4	42.0	12.0	61.0	85.0	0.445
21	S-12M21LT	32.9	42.0	13.0	61.0	85.0	0.470
22	S-12M22LT	34.3	42.0	13.0	61.0	85.0	0.486
23	S-12M23LT	35.3	42.0	13.0	61.0	85.0	0.494
24	S-12M24LT	36.8	42.0	15.0	61.0	85.0	0.512
26	S-12M26LT	38.5	42.0	15.0	66.0	90.0	0.545
27	S-12M27LT	40.5	42.0	16.0	66.0	90.0	0.643
28	S-12M28LT	42.0	42.0	16.0	66.0	90.0	0.621
30	S-12M30LT	44.4	44.0	18.0	66.0	90.0	0.682
32	S-12M32LT	46.8	44.0	18.0	66.0	90.0	0.726
33	S-12M33LT	48.0	44.0	18.0	66.0	90.0	0.744
34	S-12M34LT	49.3	44.0	20.0	66.0	90.0	0.767
36	S-12M36LT	51.9	44.0	20.0	66.0	90.0	0.822
38	S-12M38LT	54.4	54.0	23.0	66.0	90.0	1.020
41	S-12M41LT	58.4	54.0	23.0	66.0	90.0	1.103
42	S-12M42LT	59.4	54.0	25.0	66.0	90.0	1.092
43	S-12M43LT	60.4	54.0	25.0	66.0	90.0	1.095
46	S-12M46LT	64.0	54.0	25.0	66.0	90.0	1.169

### FRACTIONAL DEEP HEXAGON

A/F inch	MODEL NO.	D1 inch	D2 inch	T inch	C inch	OAL inch	Wt. lbs.
11/16	S-1211LT	1.128	1.654	0.472	2.402	3.346	0.950
3/4	S-1212LT	1.197	1.654	0.472	2.402	3.346	0.980
13/16	S-1213LT	1.295	1.654	0.512	2.402	3.346	1.030
7/8	S-1214LT	1.390	1.654	0.512	2.402	3.346	1.090
15/16	S-1215LT	1.449	1.654	0.591	2.402	3.346	1.130
1	S-1216LT	1.516	1.654	0.591	2.598	3.543	1.200
1.1/16	S-1217LT	1.594	1.654	0.630	2.598	3.543	1.410
1.1/8	S-1218LT	1.748	1.732	0.709	2.598	3.543	1.500
1.3/16	S-1219LT	1.778	1.732	0.709	2.598	3.543	1.530
1.1/4	S-1220LT	1.843	1.732	0.709	2.598	3.543	1.600
1.5/16	S-1221LT	1.941	1.732	0.787	2.598	3.543	1.690
1.3/8	S-1222LT	2.043	1.732	0.787	2.598	3.543	1.810
1.7/16	S-1223LT	2.073	1.732	0.787	2.598	3.543	1.830
1.1/2	S-1224LT	2.142	2.126	0.906	2.598	3.543	2.240
1.9/16	S-1225LT	2.299	2.126	0.906	2.598	3.543	2.430
1.5/8	S-1226LT	2.378	2.126	0.984	2.598	3.543	2.410
1.11/16	S-1227LT	2.378	2.126	0.984	2.598	3.543	2.410
1.3/4	S-1228LT	2.520	2.126	0.984	2.598	3.543	2.570
1.13/16	S-1229LT	2.550	2.126	0.984	2.598	3.543	2.600

# ГОЛОВКИ УДАРНЫЕ ТОНКОСТЕННЫЕ

1

## 6-ГРАННЫЕ



A/F MM	МОДЕЛЬ	D1 MM	D2 MM	T MM	C MM	OAL MM	Вес кг.
22	S-16M22T	35.6	51.0	14.0	25.0	55.0	0.48
23	S-16M23T	37.0	51.0	14.0	25.0	55.0	0.48
24	S-16M24T	38.0	51.0	16.0	27.0	57.0	0.50
25	S-16M25T	39.5	51.0	16.0	27.0	57.0	0.50
26	S-16M26T	40.8	51.0	16.0	27.0	57.0	0.51
27	S-16M27T	42.0	51.0	16.0	27.0	57.0	0.52
28	S-16M28T	43.3	51.0	16.0	27.0	57.0	0.52
29	S-16M29T	44.5	51.0	18.0	29.0	59.0	0.54
30	S-16M30T	45.9	51.0	18.0	29.0	59.0	0.55
31	S-16M31T	47.0	51.0	18.0	29.0	59.0	0.55
32	S-16M32T	48.3	51.0	18.0	29.0	59.0	0.56
33	S-16M33T	49.5	51.0	18.0	29.0	59.0	0.56
34	S-16M34T	51.0	51.0	20.0	31.0	61.0	0.59
35	S-16M35T	52.0	54.0	20.0	31.0	61.0	0.65
36	S-16M36T	53.4	54.0	20.0	31.0	61.0	0.69
37	S-16M37T	54.0	54.0	20.0	31.0	61.0	0.69
38	S-16M38T	55.9	54.0	22.0	34.0	64.0	0.75
39	S-16M39T	57.1	54.0	22.0	34.0	64.0	0.78
40	S-16M40T	58.1	54.0	22.0	34.0	64.0	0.79
41	S-16M41T	59.9	54.0	22.0	34.0	64.0	0.82
42	S-16M42T	60.9	54.0	24.0	36.0	66.0	0.85
43	S-16M43T	62.0	54.0	24.0	36.0	66.0	0.86
44	S-16M44T	63.4	54.0	24.0	36.0	66.0	0.88
45	S-16M45T	64.6	54.0	24.0	36.0	66.0	0.89
46	S-16M46T	65.9	54.0	26.0	38.0	68.0	0.93

## FRACTIONAL HEXAGON



A/F inch	MODEL NO.	D1 inch	D2 inch	T inch	C inch	OAL inch	Wt. lbs.
7/8	S-1614T	1.457	2.008	0.551	0.984	2.165	1.06
15/16	S-1615T	1.508	2.008	0.630	1.063	2.244	1.10
1	S-1616T	1.606	2.008	0.630	1.063	2.244	1.12
1.1/16	S-1617T	1.654	2.008	0.630	1.063	2.244	1.13
1.1/8	S-1618T	1.752	2.008	0.709	1.142	2.323	1.18
1.3/16	S-1619T	1.850	2.008	0.709	1.142	2.323	1.21
1.1/4	S-1620T	1.902	2.008	0.709	1.142	2.323	1.23
1.5/16	S-1621T	2.008	2.008	0.787	1.220	2.402	1.29
1.3/8	S-1622T	2.047	2.126	0.787	1.220	2.402	1.44
1.7/16	S-1623T	2.126	2.126	0.787	1.220	2.402	1.51
1.1/2	S-1624T	2.201	2.126	0.866	1.339	2.520	1.65
1.9/16	S-1625T	2.287	2.126	0.866	1.339	2.520	1.73
1.5/8	S-1626T	2.398	2.126	0.945	1.417	2.598	1.87
1.11/16	S-1627T	2.437	2.126	0.945	1.417	2.598	1.89
1.3/4	S-1628T	2.543	2.126	0.945	1.417	2.598	1.97
1.13/16	S-1629T	2.594	2.126	1.024	1.496	2.677	2.05



## 6-ГРАННЫЕ ГЛУБОКИЕ



A/F MM	МОДЕЛЬ	D1 MM	D2 MM	T MM	C MM	OAL MM	Вес кг.
22	S-16M22LT	35.6	54.0	14.0	80.0	110.0	1.05
23	S-16M23LT	37.0	54.0	14.0	80.0	110.0	1.05
24	S-16M24LT	38.3	54.0	16.0	80.0	110.0	1.05
25	S-16M25LT	39.5	54.0	16.0	80.0	110.0	1.10
26	S-16M26LT	40.8	54.0	16.0	80.0	110.0	1.10
27	S-16M27LT	42.0	54.0	16.0	80.0	110.0	1.10
28	S-16M28LT	43.3	54.0	16.0	80.0	110.0	1.15
29	S-16M29LT	44.5	54.0	16.0	80.0	110.0	1.15
30	S-16M30LT	45.9	54.0	21.0	80.0	110.0	1.22
31	S-16M31LT	47.0	54.0	21.0	80.0	110.0	1.21
32	S-16M32LT	48.3	54.0	21.0	80.0	110.0	1.25
33	S-16M33LT	49.5	54.0	21.0	80.0	110.0	1.27
34	S-16M34LT	50.8	54.0	21.0	80.0	110.0	1.30
35	S-16M35LT	52.0	54.0	21.0	80.0	110.0	1.30
36	S-16M36LT	53.4	54.0	25.0	80.0	110.0	1.30
37	S-16M37LT	54.0	54.0	25.0	80.0	110.0	1.45
38	S-16M38LT	55.9	54.0	25.0	80.0	110.0	1.50
39	S-16M39LT	57.1	54.0	25.0	80.0	110.0	1.60
40	S-16M40LT	58.1	54.0	25.0	80.0	110.0	1.60
41	S-16M41LT	59.9	54.0	28.0	80.0	110.0	1.60
42	S-16M42LT	60.9	54.0	28.0	80.0	110.0	1.65
43	S-16M43LT	61.9	54.0	28.0	80.0	110.0	1.70
44	S-16M44LT	63.4	54.0	28.0	80.0	110.0	1.70
45	S-16M45LT	64.6	54.0	28.0	80.0	110.0	1.70
46	S-16M46LT	65.9	54.0	28.0	80.0	110.0	2.15

## FRACTIONAL DEEP HEXAGON



A/F inch	MODEL NO.	D1 inch	D2 inch	T inch	C inch	OAL inch	Wt. lbs.
7/8	S-1614LT	1.417	2.125	0.629	3.149	4.330	2.21
15/16	S-1615LT	1.507	2.125	0.629	3.149	4.330	2.21
1	S-1616LT	1.574	2.125	0.629	3.149	4.330	2.42
1.1/16	S-1617LT	1.653	2.125	0.629	3.149	4.330	2.53
1.1/8	S-1618LT	1.728	2.125	0.629	3.149	4.330	2.53
1.3/16	S-1619LT	1.807	2.125	0.826	3.149	4.330	2.70
1.1/4	S-1620LT	1.889	2.125	0.826	3.149	4.330	2.75
1.5/16	S-1621LT	1.968	2.125	0.826	3.149	4.330	2.95
1.3/8	S-1622LT	2.047	2.125	0.826	3.149	4.330	2.86
1.7/16	S-1623LT	2.125	2.125	0.984	3.149	4.330	3.22
1.1/2	S-1624LT	2.200	2.125	0.984	3.149	4.330	3.30
1.9/16	S-1625LT	2.283	2.125	0.984	3.149	4.330	3.52
1.5/8	S-1626LT	2.358	2.125	1.102	3.149	4.330	3.52
1.11/16	S-1627LT	2.437	2.125	1.102	3.149	4.330	3.52
1.3/4	S-1628LT	2.519	2.125	1.102	3.149	4.330	3.74
1.13/16	S-1629LT	2.594	2.125	1.102	3.149	4.330	3.74

# ГОЛОВКИ УДАРНЫЕ ТОНКОСТЕННЫЕ

3/8"

## 6-ГРАННЫЕ



## FRACTIONAL HEXAGON



A/F MM	МОДЕЛЬ	D1 MM	D2 MM	T MM	C MM	OAL MM	Вес кг.
8	S-06M8T	12.3	19.0	6.0	14.0	25.5	0.028
10	S-06M10T	14.8	19.0	7.0	14.0	25.5	0.030
11	S-06M11T	16.1	19.0	8.0	14.0	25.5	0.031
13	S-06M13T	18.6	19.0	9.0	14.0	25.5	0.035
17	S-06M17T	23.7	22.0	12.0	18.0	30.0	0.069
19	S-06M19T	26.3	22.0	12.0	18.0	30.0	0.081

A/F inch	MODEL NO.	D1 inch	D2 inch	T inch	C inch	OAL inch	Wt. lbs.
5/16	S-0605T	0.484	0.748	0.236	0.531	1.004	0.061
3/8	S-0606T	0.551	0.748	0.236	0.531	1.004	0.065
7/16	S-0607T	0.634	0.748	0.315	0.531	1.004	0.068
1/2	S-0608T	0.732	0.748	0.354	0.531	1.004	0.077
9/16	S-0609T	0.787	0.787	0.394	0.531	1.004	0.088
5/8	S-0610T	0.866	0.866	0.394	0.709	1.181	0.138

Thinwall Deep Hexagon Sockets available on request.

1/2"

# ГОЛОВКИ УДАРНЫЕ ТОНКОСТЕННЫЕ

## 6-ГРАННЫЕ



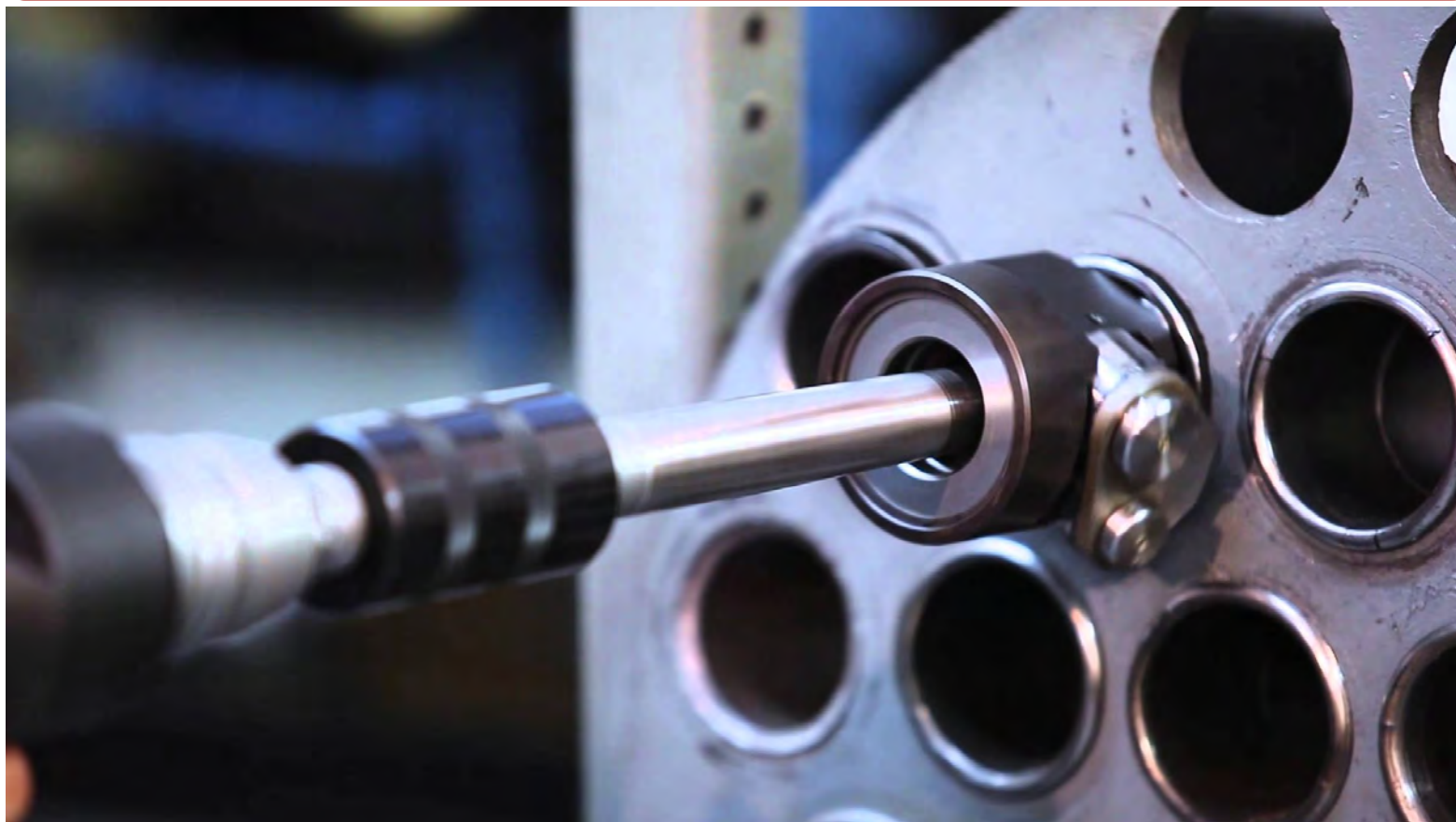
## FRACTIONAL HEXAGON



A/F MM	МОДЕЛЬ	D1 MM	D2 MM	T MM	C MM	OAL MM	Вес кг.
15	S-08M15T	22.0	25.0	11.0	18.0	35.0	0.073
16	S-08M16T	23.3	25.0	11.0	18.0	35.0	0.078
17	S-08M17T	25.0	25.0	12.0	19.0	36.0	0.086
18	S-08M18T	26.0	26.0	13.0	20.0	37.0	0.097
19	S-08M19T	27.0	27.0	14.0	21.0	38.0	0.109
21	S-08M21T	29.5	30.0	14.0	22.0	39.0	0.137

A/F inch	MODEL NO.	D1 inch	D2 inch	T inch	C inch	OAL inch	Wt. lbs.
9/16	S-0809T	0.864	0.984	0.433	0.709	1.378	0.160
5/8	S-0810T	0.917	0.984	0.433	0.709	1.378	0.170
11/16	S-0811T	0.984	0.984	0.472	0.748	1.417	0.190
3/4	S-0812T	1.063	1.063	0.551	0.827	1.496	0.240
13/16	S-0813T	1.161	1.161	0.551	0.866	1.535	0.300
15/16	S-0815T	1.341	1.181	0.551	0.905	1.614	0.420

Thinwall Deep Hexagon Sockets available on request.



Архангельск (8182)63-90-72  
Астана (7172)727-132  
Астрахань (8512)99-46-04  
Барнаул (3852)73-04-60  
Белгород (4722)40-23-64  
Брянск (4832)59-03-52  
Владивосток (423)249-28-31  
Волгоград (844)278-03-48  
Вологда (8172)26-41-59  
Воронеж (473)204-51-73  
Екатеринбург (343)384-55-89

Иваново (4932)77-34-06  
Ижевск (3412)26-03-58  
Иркутск (395)279-98-46  
Казань (843)206-01-48  
Калининград (4012)72-03-81  
Калуга (4842)92-23-67  
Кемерово (3842)65-04-62  
Киров (8332)68-02-04  
Краснодар (861)203-40-90  
Красноярск (391)204-63-61  
Курск (4712)77-13-04  
Липецк (4742)52-20-81

Магнитогорск (3519)55-03-13  
Москва (495)268-04-70  
Мурманск (8152)59-64-93  
Набережные Челны (8552)20-53-41  
Нижний Новгород (831)429-08-12  
Новокузнецк (3843)20-46-81  
Новосибирск (383)227-86-73  
Омск (3812)21-46-40  
Орел (4862)44-53-42  
Оренбург (3532)37-68-04  
Пенза (8412)22-31-16

Пермь (342)205-81-47  
Ростов-на-Дону (863)308-18-15  
Рязань (4912)46-61-64  
Самара (846)206-03-16  
Санкт-Петербург (812)309-46-40  
Саратов (845)249-38-78  
Севастополь (8692)22-31-93  
Симферополь (3652)67-13-56  
Смоленск (4812)29-41-54  
Сочи (862)225-72-31  
Ставрополь (8652)20-65-13

Сургут (3462)77-98-35  
Тверь (4822)63-31-35  
Томск (3822)98-41-53  
Тула (4872)74-02-29  
Тюмень (3452)66-21-18  
Ульяновск (8422)24-23-59  
Уфа (347)229-48-12  
Хабаровск (4212)92-98-04  
Челябинск (351)202-03-61  
Череповец (8202)49-02-64  
Ярославль (4852)69-52-93

Россия (495)268-04-70 Киргизия (996)312-96-26-47 Казахстан (772)734-952-31

Единый адрес для всех регионов: [www.powermaster.nt-rt.ru](http://www.powermaster.nt-rt.ru) || [pwo@nt-rt.ru](mailto:pwo@nt-rt.ru)