

УДАРНЫЕ ГОЛОВКИ

1" 8/12-гранные



Архангельск (8182)63-90-72
Астана (7172)727-132
Астрахань (8512)99-46-04
Барнаул (3852)73-04-60
Белгород (4722)40-23-64
Брянск (4832)59-03-52
Владивосток (423)249-28-31
Волгоград (844)278-03-48
Вологда (8172)26-41-59
Воронеж (473)204-51-73
Екатеринбург (343)384-55-89

Иваново (4932)77-34-06
Ижевск (3412)26-03-58
Иркутск (395)279-98-46
Казань (843)206-01-48
Калининград (4012)72-03-81
Калуга (4842)92-23-67
Кемерово (3842)65-04-62
Киров (8332)68-02-04
Краснодар (861)203-40-90
Красноярск (391)204-63-61
Курск (4712)77-13-04
Липецк (4742)52-20-81

Магнитогорск (3519)55-03-13
Москва (495)268-04-70
Мурманск (8152)59-64-93
Набережные Челны (8552)20-53-41
Нижний Новгород (831)429-08-12
Новокузнецк (3843)20-46-81
Новосибирск (383)227-86-73
Омск (3812)21-46-40
Орел (4862)44-53-42
Оренбург (3532)37-68-04
Пенза (8412)22-31-16

Пермь (342)205-81-47
Ростов-на-Дону (863)308-18-15
Рязань (4912)46-61-64
Самара (846)206-03-16
Санкт-Петербург (812)309-46-40
Саратов (845)249-38-78
Севастополь (8692)22-31-93
Симферополь (3652)67-13-56
Смоленск (4812)29-41-54
Сочи (862)225-72-31
Ставрополь (8652)20-65-13

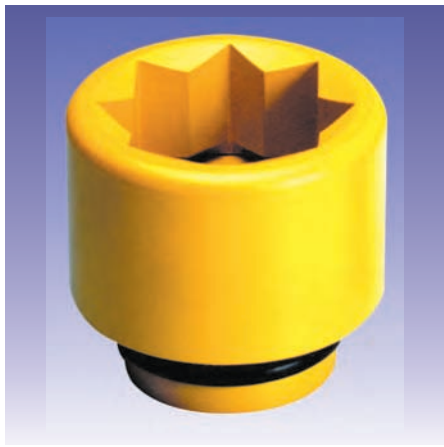
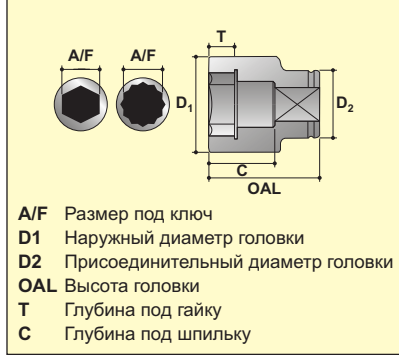
Сургут (3462)77-98-35
Тверь (4822)63-31-35
Томск (3822)98-41-53
Тула (4872)74-02-29
Тюмень (3452)66-21-18
Ульяновск (8422)24-23-59
Уфа (347)229-48-12
Хабаровск (4212)92-98-04
Челябинск (351)202-03-61
Череповец (8202)49-02-64
Ярославль (4852)69-52-93

Россия (495)268-04-70 Киргизия (996)312-96-26-47 Казахстан (772)734-952-31

Единый адрес для всех регионов: www.powermaster.nt-rt.ru || pwo@nt-rt.ru



ГОЛОВКИ УДАРНЫЕ



8-ГРАННЫЕ

FRACTIONAL BISQUARE

A/F MM	МОДЕЛЬ	D1 MM	D2 MM	T MM	C MM	OAL MM	Вес кг.
32	16M32DS	65.0	54.0	21.0	28.0	58.0	0.86
33	16M33DS	65.0	54.0	21.0	28.0	58.0	0.86
34	16M34DS	68.0	54.0	21.0	31.0	61.0	0.90
35	16M35DS	68.0	54.0	21.0	31.0	61.0	0.90
36	16M36DS	71.0	54.0	25.0	31.0	61.0	0.92
38	16M38DS	74.0	54.0	25.0	35.0	65.0	1.15
39	16M39DS	74.0	54.0	25.0	35.0	65.0	1.15
40	16M40DS	77.0	54.0	25.0	35.0	65.0	1.16
41	16M41DS	77.0	54.0	28.0	35.0	65.0	1.16
42	16M42DS	80.0	54.0	28.0	35.0	65.0	1.36
43	16M43DS	80.0	54.0	28.0	40.0	70.0	1.46
46	16M46DS	86.0	54.0	28.0	40.0	70.0	1.50
50	16M50DS	90.0	54.0	28.0	43.0	73.0	1.70
51	16M51DS	93.0	54.0	28.0	43.0	73.0	1.80
54	16M54DS	98.0	54.0	28.0	47.0	77.0	2.25
55	16M55DS	98.0	54.0	30.0	47.0	77.0	2.25
57	16M57DS	103.0	86.0	30.0	47.0	77.0	2.95
60	16M60DS	106.0	86.0	32.0	53.0	83.0	3.20
65	16M65DS	112.0	86.0	38.0	56.0	86.0	3.65

A/F inch	MODEL NO.	D1 inch	D2 inch	T inch	C inch	OAL inch	Wt. lbs.
1.1/4	1620DS	2.559	2.125	0.826	1.141	2.283	1.89
1.5/16	1621DS	2.559	2.125	0.826	1.141	2.283	1.89
1.3/8	1622DS	2.677	2.125	0.826	1.220	2.401	1.98
1.7/16	1623DS	2.795	2.125	0.984	1.220	2.401	2.02
1.1/2	1624DS	2.913	2.125	0.984	1.377	2.559	2.53
1.9/16	1625DS	2.834	2.125	0.984	1.377	2.559	2.55
1.5/8	1626DS	3.031	2.125	1.102	1.377	2.559	2.55
1.11/16	1627DS	3.149	2.125	1.102	1.574	2.755	3.30
1.3/4	1628DS	3.267	2.125	1.102	1.574	2.755	3.30
1.13/16	1629DS	3.385	2.125	1.102	1.574	2.755	3.52
1.7/8	1630DS	3.503	2.125	1.102	1.574	2.755	3.52
2	1632DS	3.661	2.125	1.102	1.692	2.874	3.96
2.1/16	1633DS	3.779	2.125	1.102	1.692	2.874	4.95
2.1/8	1634DS	3.779	2.125	1.102	1.850	3.031	4.95
2.3/16	1635DS	3.937	2.125	1.181	1.850	3.031	6.49
2.1/4	1636DS	4.055	3.385	1.181	2.007	3.188	6.49
2.3/8	1638DS	4.173	3.385	1.259	2.086	3.267	7.04
2.1/2	1640DS	4.409	3.385	1.259	2.204	3.385	8.47

8-ГРАННЫЕ ГЛУБОКИЕ

FRACTIONAL DEEP BISQUARE

A/F MM	МОДЕЛЬ	D1 MM	D2 MM	T MM	C MM	OAL MM	Вес кг.
32	16M32LDS	65.0	54.0	21.0	80.0	110.0	1.46
33	16M33LDS	65.0	54.0	21.0	80.0	110.0	1.46
34	16M34LDS	68.0	54.0	21.0	80.0	110.0	1.50
35	16M35LDS	68.0	54.0	21.0	80.0	110.0	1.50
36	16M36LDS	71.0	54.0	25.0	80.0	110.0	1.52
38	16M38LDS	74.0	54.0	25.0	80.0	110.0	1.75
39	16M39LDS	74.0	54.0	25.0	80.0	110.0	1.75
40	16M40LDS	77.0	54.0	25.0	80.0	110.0	1.76
41	16M41LDS	77.0	54.0	28.0	80.0	110.0	1.76
42	16M42LDS	80.0	54.0	28.0	80.0	110.0	1.96
43	16M43LDS	80.0	54.0	28.0	80.0	110.0	2.16
46	16M46LDS	86.0	54.0	28.0	80.0	110.0	2.30
50	16M50LDS	90.0	54.0	28.0	80.0	110.0	2.50
51	16M51LDS	93.0	54.0	28.0	80.0	110.0	2.60
54	16M54LDS	98.0	54.0	28.0	80.0	110.0	2.95
55	16M55LDS	98.0	54.0	30.0	80.0	110.0	2.95
57	16M57LDS	103.0	86.0	30.0	80.0	110.0	3.65
60	16M60LDS	106.0	86.0	32.0	100.0	130.0	4.00
65	16M65LDS	112.0	86.0	38.0	100.0	130.0	4.55

A/F inch	MODEL NO.	D1 inch	D2 inch	T inch	C inch	OAL inch	Wt. lbs.
1.1/4	1620LDS	2.559	2.125	0.826	3.149	4.330	3.21
1.5/16	1621LDS	2.559	2.125	0.826	3.149	4.330	3.21
1.3/8	1622LDS	2.677	2.125	0.826	3.149	4.330	3.30
1.7/16	1623LDS	2.795	2.125	0.984	3.149	4.330	3.34
1.1/2	1624LDS	2.913	2.125	0.984	3.149	4.330	3.85
1.9/16	1625LDS	2.834	2.125	0.984	3.149	4.330	3.87
1.5/8	1626LDS	3.031	2.125	1.102	3.149	4.330	3.87
1.11/16	1627LDS	3.149	2.125	1.102	3.149	4.330	4.75
1.3/4	1628LDS	3.267	2.125	1.102	3.149	4.330	4.84
1.13/16	1629LDS	3.385	2.125	1.102	3.149	4.330	5.06
1.7/8	1630LDS	3.503	2.125	1.102	3.149	4.330	5.28
2	1632LDS	3.661	2.125	1.102	3.149	4.330	5.72
2.1/16	1633LDS	3.779	2.125	1.102	3.149	4.330	6.49
2.1/8	1634LDS	3.779	2.125	1.102	3.149	4.330	6.49
2.3/16	1635LDS	3.937	2.125	1.181	3.149	4.330	8.03
2.1/4	1636LDS	4.055	3.385	1.181	3.149	4.330	8.03
2.3/8	1638LDS	4.173	3.385	1.259	3.937	5.118	8.80
2.1/2	1640LDS	4.409	3.385	1.259	3.937	5.118	10.01

ГОЛОВКИ УДАРНЫЕ



12-ГРАННЫЕ



A/F MM	МОДЕЛЬ	D1 MM	D2 MM	T MM	C MM	OAL MM	Вес кг.
19	16M19DH	36.0	51.0	14.0	25.0	55.0	0.51
20	16M20DH	36.0	51.0	14.0	25.0	55.0	0.50
21	16M21DH	38.0	51.0	14.0	25.0	55.0	0.52
22	16M22DH	40.0	51.0	14.0	25.0	55.0	0.53
23	16M23DH	40.0	51.0	14.0	25.0	55.0	0.52
24	16M24DH	42.0	51.0	16.0	27.0	57.0	0.55
25	16M25DH	43.0	51.0	16.0	27.0	57.0	0.55
26	16M26DH	45.0	51.0	16.0	27.0	57.0	0.56
27	16M27DH	46.0	51.0	16.0	27.0	57.0	0.57
28	16M28DH	47.0	51.0	16.0	27.0	57.0	0.57
29	16M29DH	48.0	51.0	18.0	29.0	59.0	0.59
30	16M30DH	49.0	54.0	18.0	29.0	59.0	0.66
31	16M31DH	50.0	54.0	18.0	29.0	59.0	0.66
32	16M32DH	52.0	54.0	18.0	29.0	59.0	0.68
33	16M33DH	54.0	54.0	18.0	29.0	59.0	0.69
34	16M34DH	54.0	54.0	20.0	31.0	61.0	0.70
35	16M35DH	54.0	54.0	20.0	31.0	61.0	0.69
36	16M36DH	57.0	54.0	20.0	31.0	61.0	0.78
37	16M37DH	57.0	54.0	20.0	31.0	61.0	0.76
38	16M38DH	59.0	54.0	22.0	34.0	64.0	0.84
39	16M39DH	60.0	54.0	22.0	34.0	64.0	0.88
40	16M40DH	60.0	54.0	22.0	34.0	64.0	0.85
41	16M41DH	62.0	54.0	22.0	34.0	64.0	0.90
42	16M42DH	64.0	54.0	24.0	36.0	66.0	0.97
43	16M43DH	65.0	54.0	24.0	36.0	66.0	0.98
44	16M44DH	66.0	54.0	24.0	36.0	66.0	0.98
45	16M45DH	68.0	54.0	24.0	36.0	66.0	1.03
46	16M46DH	68.0	54.0	26.0	38.0	68.0	1.02
47	16M47DH	71.0	54.0	26.0	38.0	68.0	1.12
48	16M48DH	71.0	54.0	26.0	38.0	68.0	1.08
49	16M49DH	74.0	54.0	28.0	40.0	70.0	1.17
50	16M50DH	74.0	54.0	28.0	40.0	70.0	1.17
51	16M51DH	77.0	62.0	28.0	40.0	70.0	1.40
52	16M52DH	77.0	62.0	28.0	40.0	70.0	1.40
54	16M54DH	79.0	62.0	28.0	40.0	70.0	1.42
55	16M55DH	79.0	62.0	30.0	44.0	74.0	1.45
56	16M56DH	80.0	62.0	30.0	44.0	74.0	1.46
57	16M57DH	84.0	62.0	30.0	44.0	74.0	1.59
58	16M58DH	84.0	62.0	30.0	44.0	74.0	1.59
59	16M59DH	87.0	62.0	32.0	47.0	77.0	1.75
60	16M60DH	87.0	62.0	32.0	47.0	77.0	1.75
62	16M62DH	90.0	62.0	34.0	49.0	79.0	1.89
65	16M65DH	93.0	62.0	36.0	51.0	81.0	1.99
70	16M70DH	99.0	86.0	38.0	54.0	84.0	2.81
75	16M75DH	104.0	86.0	40.0	56.0	89.0	3.08
80	16M80DH	112.0	86.0	42.0	58.0	91.0	3.54
85	16M85DH	119.0	86.0	44.0	60.0	93.0	3.85
90	16M90DH	122.0	86.0	46.0	62.0	95.0	3.84
95	16M95DH	130.0	106.0	48.0	64.0	97.0	5.13

FRACTIONAL BIHEXAGON



A/F inch	MODEL NO.	D1 inch	D2 inch	T inch	C inch	OAL inch	Wt. lbs.
3/4	1612DH	1.417	2.008	0.551	0.984	2.165	1.13
13/16	1613DH	1.496	2.008	0.551	0.984	2.165	1.13
7/8	1614DH	1.575	2.008	0.551	0.984	2.165	1.14
15/16	1615DH	1.654	2.008	0.630	1.063	2.244	1.20
1	1616DH	1.772	2.008	0.630	1.063	2.244	1.24
1.1/16	1617DH	1.811	2.008	0.630	1.063	2.244	1.25
1.1/8	1618DH	1.890	2.008	0.709	1.142	2.323	1.29
1.3/16	1619DH	1.969	2.126	0.709	1.142	2.323	1.45
1.1/4	1620DH	2.047	2.126	0.709	1.142	2.323	1.49
1.5/16	1621DH	2.126	2.126	0.787	1.220	2.402	1.54
1.3/8	1622DH	2.126	2.126	0.787	1.220	2.402	1.51
1.7/16	1623DH	2.244	2.126	0.787	1.220	2.402	1.68
1.1/2	1624DH	2.323	2.126	0.866	1.339	2.520	1.86
1.9/16	1625DH	2.362	2.126	0.866	1.339	2.520	1.88
1.5/8	1626DH	2.520	2.126	0.945	1.417	2.598	2.13
1.11/16	1627DH	2.559	2.126	0.945	1.417	2.598	2.15
1.3/4	1628DH	2.677	2.126	0.945	1.417	2.598	2.27
1.13/16	1629DH	2.677	2.126	1.024	1.496	2.677	2.25
1.7/8	1630DH	2.795	2.126	1.024	1.496	2.677	2.37
1.15/16	1631DH	2.795	2.126	1.024	1.496	2.677	2.37
2	1632DH	2.963	2.126	1.102	1.575	2.756	2.67
2.1/16	1633DH	2.963	2.126	1.102	1.575	2.756	2.67
2.1/8	1634DH	3.110	2.441	1.102	1.575	2.756	3.13
2.3/16	1635DH	3.150	2.441	1.181	1.732	2.913	3.21
2.1/4	1636DH	3.307	2.441	1.181	1.732	2.913	3.50
2.5/16	1637DH	3.307	2.441	1.181	1.732	2.913	3.50
2.3/8	1638DH	3.405	2.441	1.260	1.850	3.031	3.77
2.7/16	1639DH	3.543	2.441	1.339	1.929	3.110	4.17
2.1/2	1640DH	3.543	2.441	1.339	1.929	3.110	4.17
2.9/16	1641DH	3.711	2.441	1.417	2.008	3.189	4.38
2.5/8	1642DH	3.711	2.441	1.417	2.008	3.189	4.38
2.11/16	1643DH	3.898	3.386	1.496	2.126	3.307	6.19
3.3/4	1644DH	3.898	3.386	1.496	2.126	3.307	6.19
2.13/16	1645DH	3.898	3.386	1.496	2.126	3.307	6.19
2.7/8	1646DH	4.094	3.386	1.575	2.205	3.504	6.77
2.15/16	1647DH	4.094	3.386	1.575	2.205	3.504	6.77
3	1648DH	4.094	3.386	1.575	2.205	3.504	6.77
3.1/16	1649DH	4.425	3.386	1.654	2.283	3.583	7.80
3.1/8	1650DH	4.425	3.386	1.654	2.283	3.583	7.80
3.3/16	1651DH	4.425	3.386	1.654	2.283	3.583	7.80
3.1/4	1652DH	4.651	3.386	1.732	2.362	3.661	8.13
3.5/16	1653DH	4.742	3.386	1.732	2.362	3.661	8.48
3.3/8	1654DH	4.742	3.386	1.732	2.362	3.661	8.48
3.7/16	1655DH	4.803	3.386	1.811	2.441	3.740	8.44
3.1/2	1656DH	4.803	3.386	1.811	2.441	3.740	8.44
3.5/8	1658DH	5.118	4.173	1.890	2.520	3.819	11.29
3.3/4	1660DH	5.118	4.173	1.890	2.520	3.819	11.29
3.7/8	1662DH	5.276	4.173	1.969	2.598	3.898	11.44



Архангельск (8182)63-90-72
Астана (7172)727-132
Астрахань (8512)99-46-04
Барнаул (3852)73-04-60
Белгород (4722)40-23-64
Брянск (4832)59-03-52
Владивосток (423)249-28-31
Волгоград (844)278-03-48
Вологда (8172)26-41-59
Воронеж (473)204-51-73
Екатеринбург (343)384-55-89

Иваново (4932)77-34-06
Ижевск (3412)26-03-58
Иркутск (395)279-98-46
Казань (843)206-01-48
Калининград (4012)72-03-81
Калуга (4842)92-23-67
Кемерово (3842)65-04-62
Киров (8332)68-02-04
Краснодар (861)203-40-90
Красноярск (391)204-63-61
Курск (4712)77-13-04
Липецк (4742)52-20-81

Магнитогорск (3519)55-03-13
Москва (495)268-04-70
Мурманск (8152)59-64-93
Набережные Челны (8552)20-53-41
Нижний Новгород (831)429-08-12
Новокузнецк (3843)20-46-81
Новосибирск (383)227-86-73
Омск (3812)21-46-40
Орел (4862)44-53-42
Оренбург (3532)37-68-04
Пенза (8412)22-31-16

Пермь (342)205-81-47
Ростов-на-Дону (863)308-18-15
Рязань (4912)46-61-64
Самара (846)206-03-16
Санкт-Петербург (812)309-46-40
Саратов (845)249-38-78
Севастополь (8692)22-31-93
Симферополь (3652)67-13-56
Смоленск (4812)29-41-54
Сочи (862)225-72-31
Ставрополь (8652)20-65-13

Сургут (3462)77-98-35
Тверь (4822)63-31-35
Томск (3822)98-41-53
Тула (4872)74-02-29
Тюмень (3452)66-21-18
Ульяновск (8422)24-23-59
Уфа (347)229-48-12
Хабаровск (4212)92-98-04
Челябинск (351)202-03-61
Череповец (8202)49-02-64
Ярославль (4852)69-52-93

Россия (495)268-04-70 Киргизия (996)312-96-26-47 Казахстан (772)734-952-31

Единый адрес для всех регионов: www.powermaster.nt-rt.ru || pwo@nt-rt.ru